



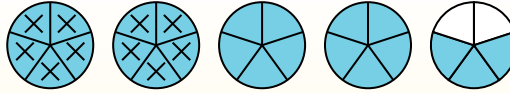
Usa el modelo visual para resolver cada problema.

$4 \frac{3}{5} - 2 \frac{4}{5} = ?$

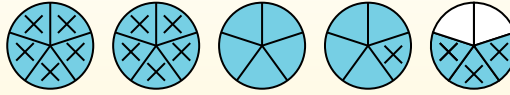
Para resolver un problema de resta de fracción una estrategia es sombrear la cantidad inicial primero ( $4 \frac{3}{5}$ ).



Luego marque los enteros (2).



Por último marque la fracción ( $\frac{4}{5}$ ).



Ahora podemos ver que  $4 \frac{3}{5} - 2 \frac{4}{5} = 1 \frac{4}{5}$

**Respuestas**

1. \_\_\_\_\_
2. \_\_\_\_\_
3. \_\_\_\_\_
4. \_\_\_\_\_
5. \_\_\_\_\_
6. \_\_\_\_\_
7. \_\_\_\_\_
8. \_\_\_\_\_
9. \_\_\_\_\_
10. \_\_\_\_\_
11. \_\_\_\_\_
12. \_\_\_\_\_

1)  $3 \frac{3}{10} - 1 \frac{1}{10} =$

2)  $6 \frac{3}{10} - 2 \frac{4}{10} =$

3)  $5 \frac{9}{10} - 2 \frac{8}{10} =$

4)  $4 \frac{3}{6} - 1 \frac{2}{6} =$

5)  $5 \frac{3}{4} - 1 \frac{2}{4} =$

6)  $4 \frac{1}{4} - 1 \frac{1}{4} =$

7)  $3 \frac{1}{4} - 1 \frac{2}{4} =$

8)  $5 \frac{1}{4} - 3 \frac{2}{4} =$

9)  $5 \frac{3}{10} - 3 \frac{6}{10} =$

10)  $5 \frac{1}{3} - 2 \frac{1}{3} =$

11)  $3 \frac{5}{8} - 1 \frac{2}{8} =$

12)  $5 \frac{2}{4} - 2 \frac{2}{4} =$



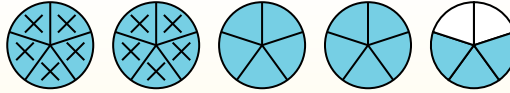
Usa el modelo visual para resolver cada problema.

$4 \frac{3}{5} - 2 \frac{4}{5} = ?$

Para resolver un problema de resta de fracción una estrategia es sombrear la cantidad inicial primero ( $4 \frac{3}{5}$ ).



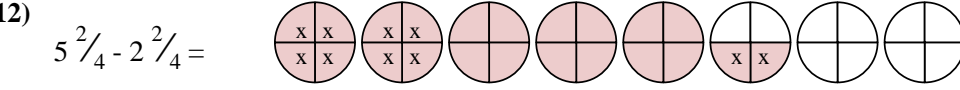
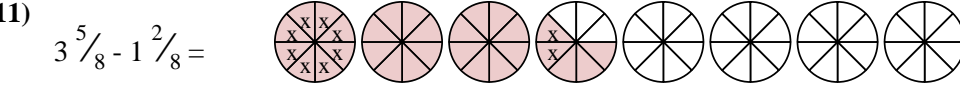
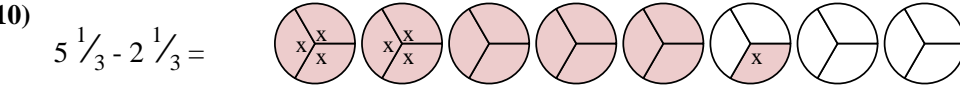
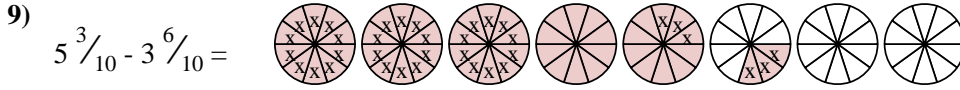
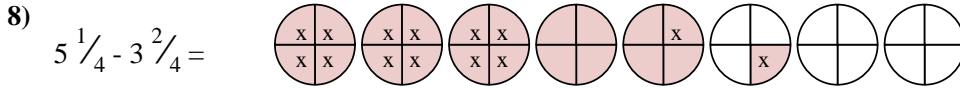
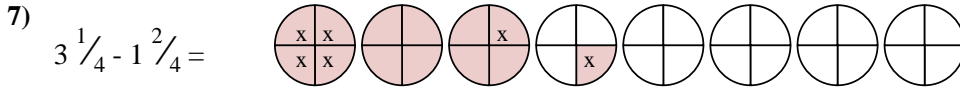
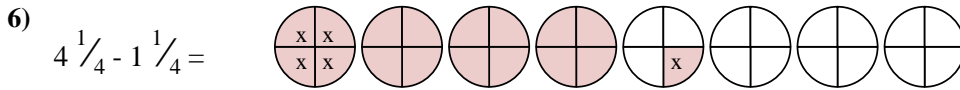
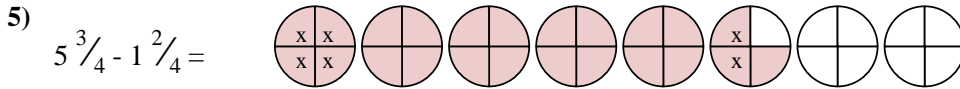
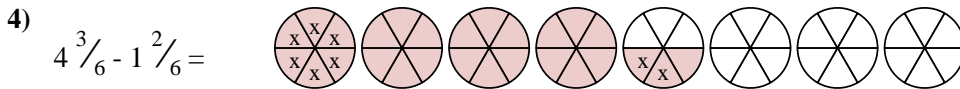
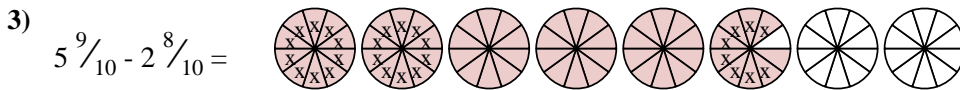
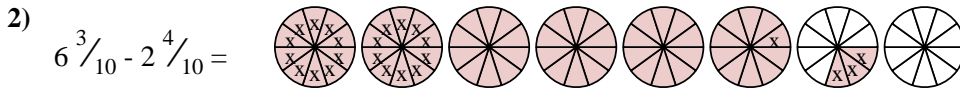
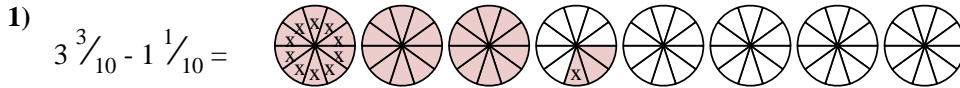
Luego marque los enteros (2).



Por último marque la fracción ( $\frac{4}{5}$ ).



Ahora podemos ver que  $4 \frac{3}{5} - 2 \frac{4}{5} = 1 \frac{4}{5}$



**Respuestas**

1. 2 <sup>2</sup>/<sub>10</sub>

2. 3 <sup>9</sup>/<sub>10</sub>

3. 3 <sup>1</sup>/<sub>10</sub>

4. 3 <sup>1</sup>/<sub>6</sub>

5. 4 <sup>1</sup>/<sub>4</sub>

6. 3

7. 1 <sup>3</sup>/<sub>4</sub>

8. 1 <sup>3</sup>/<sub>4</sub>

9. 1 <sup>7</sup>/<sub>10</sub>

10. 3

11. 2 <sup>3</sup>/<sub>8</sub>

12. 3